

## PROMASTOP<sup>®</sup>-M Fire stopping mortar Product handling guideline

Penetration seal



### PROMASTOP®-M Fire stopping mortar



PROMASTOP®-M is a cement based fire stopping mortar, which binds without cracks.

#### General information

- Cement based mortar for external use;
- Installation manual or by machine;
- Recommended mixing ratio -
  - **manual installation:**  
mortar:water = 5:2,4 (20 kg mortar powder will produce up to 23 litres of fresh mortar);
  - **machine installation:**  
depending on machine settings;
- The consistency of PROMASTOP®-M is very sticky and can therefore even be applied overhead in small areas.
- Pre-drilling for screws not required;
- Ensure enough space around the services to install a fire stopping penetration seal. Otherwise the necessary space has to be created.
- Clean application tools immediately after use with water;
- PROMASTOP®-M will reach its final hardness after 28 days;
- Use category: type X;
- Minimum +5 °C, maximum +35 °C substrate and surrounding temperature;
- For use within absorbent substrates, premoisten with clean water;
- Once opened bags should be used as soon as possible. Reseal bags properly after use;
- Store bags under dry conditions;

#### System installation details

Please refer to ETA, classification report or handbook for installation details on cable, pipes and ducts.

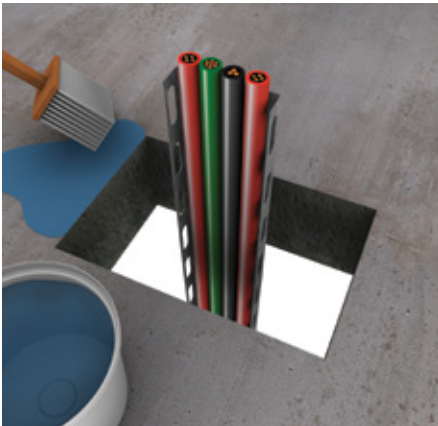
#### Safety information

Safety data sheet available on request.

Theoretical consumption data for 100 mm thickness and 1 m<sup>2</sup> penetration

		10 % cable capacity	20 % cable capacity	30 % cable capacity	40 % cable capacity
PROMASTOP®-M	kg	100	90	80	70
PROMASEAL®-AG	pc.	2,5	5	7,5	10

### Installation guideline



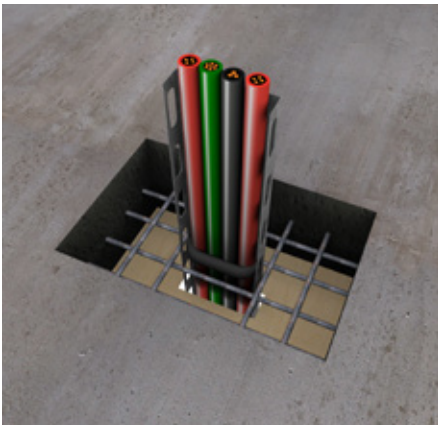
1. Clean opening with water



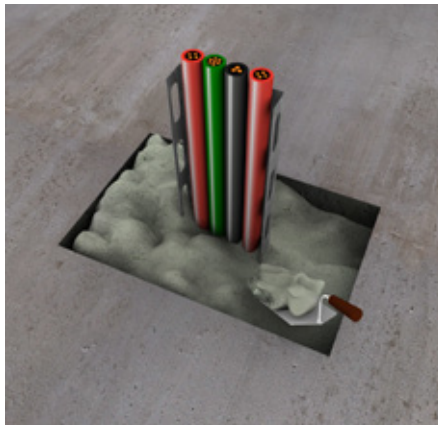
2. For building penetration seals in floors, install 100 mm plugirons. These plug irons should be installed central of mortar penetration seal every 300 mm, but minimum one plug iron on each side and should be inserted 50 mm in the floor and covered by 50 mm of PROMASTOP®-M. No plug irons required for wall application.



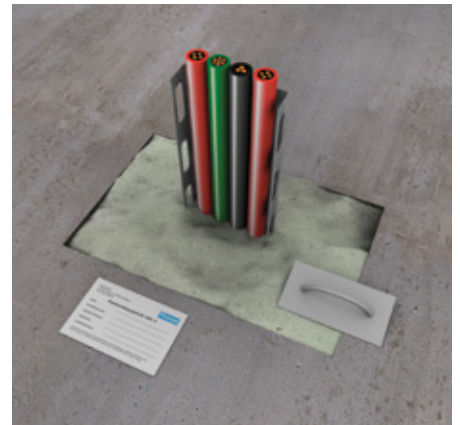
3. Apply PROMASEAL®-AG for cables and cable bundles



4. Where necessary fix form work for lining (e.g. mineral wool, wood or other shuttering) or framing (e.g. PROMATECT® boards, fire resistance gypsum boards), depending on size of penetration; Wall: install PROMASTOP®-M symmetrically (25 or 50 mm on both sides outside a 100 mm wall), also install PROMASTOP®-B symmetrically; Floor: install PROMASTOP®-M and PROMASTOP®-B asymmetrically (50 mm outside on upper side of a 150 mm floor);



5. Close remaining opening with PROMASTOP®-M. Consider that mortar is sagging in bigger penetration sizes, which requires a work over to reach correct thickness or height;



6. Smoothen the surface; Fix identification label

**For more installation details on cables, pipes and ducts refer to classification report.**

The products must be applied in accordance with regulations for construction material in general and fire stopping in particular, with the applicable national test certificates and approvals and in accordance with applicable national building regulations. Products may only be applied by trained professionals with adequate knowledge and only after thorough review of the installation guidelines, safety data sheets, national test certificates and approvals. For additional information on how and where to use this product please refer to the Promat handbook or contact your local Promat office. All the relevant documents can be obtained free of charge from the local Promat office. For Non European Union countries separate guidelines are relevant. If required please contact us.

## **Bulgaria**

### **Etex Building Performance S.A.**

Str. Vulturilor Nr. 98, 5th Floor  
030857 Bucharest, Romania  
M +359 878 81 51 05  
E [info.bg@promat-see.com](mailto:info.bg@promat-see.com)  
[www.promat-see.com](http://www.promat-see.com)

## **Croatia, Bosnia and Herzegovina**

### **Etex Building Performance**

#### **Promat d.o.o.**

Kovinska 4a  
10090 Zagreb  
T +385 1 349 63 24  
F +385 1 379 41 54  
E [info.hr@promat-see.com](mailto:info.hr@promat-see.com)  
[www.promat-see.com](http://www.promat-see.com)

## **Greece**

### **Etex Building Performance S.A.**

Str. Vulturilor Nr. 98, 5th Floor  
030857 Bucharest, Romania  
T +40 31 224 01 00  
F +40 31 224 01 01  
E [info@promat-see.com](mailto:info@promat-see.com)  
[www.promat-see.com](http://www.promat-see.com)

## **Hungary**

### **Etex Building Performance**

#### **Creaton South-East Europe Kft.**

Malomkő u. 7.1. emelet  
2040 Budaörs  
M +36 30 343 2572  
M +36 30 455 1273  
E [info.hu@promat-see.com](mailto:info.hu@promat-see.com)  
[www.promat-see.com](http://www.promat-see.com)

## **Kosovo, Albania**

### **Etex Building Performance Sh.A.**

Ulpiana, D-1, HY-4 Nr.2  
10000 Prishtina  
T +383 38 553 407  
M +381 64 61 39 763  
M +377 44 120 671  
E [info@promat-see.com](mailto:info@promat-see.com)  
[www.promat-see.com](http://www.promat-see.com)

## **Romania**

### **Etex Building Performance S.A.**

Str. Vulturilor Nr. 98, 5th Floor  
030857 Bucharest  
T +40 31 224 01 00  
F +40 31 224 01 01  
E [info.ro@promat-see.com](mailto:info.ro@promat-see.com)  
[www.promat-see.com](http://www.promat-see.com)

## **Serbia, Macedonia, Montenegro**

### **Etex Building Performance d.o.o.**

Vojvode Putnika 79  
21208 Sremska Kamenica  
T +381 21 210 10 90  
M +381 63 625 426  
M +381 63 510 720  
E [info.rs@promat-see.com](mailto:info.rs@promat-see.com)  
[www.promat-see.com](http://www.promat-see.com)

## **Slovakia**

### **Etex Building Performance**

#### **EBM Co. s.r.o.**

Štúrova 155  
949 01 Nitra  
M +421 915 936 126  
E [info.sk@promat-see.com](mailto:info.sk@promat-see.com)  
[www.promat-see.com](http://www.promat-see.com)

## **Slovenia**

### **Etex Building Performance**

#### **Promat d.o.o.**

Kidričeva 56b  
4220 Škofja Loka  
T +386 4 51 51 451  
F +385 4 51 51 450  
E [info.si@promat-see.com](mailto:info.si@promat-see.com)  
[www.promat-see.com](http://www.promat-see.com)