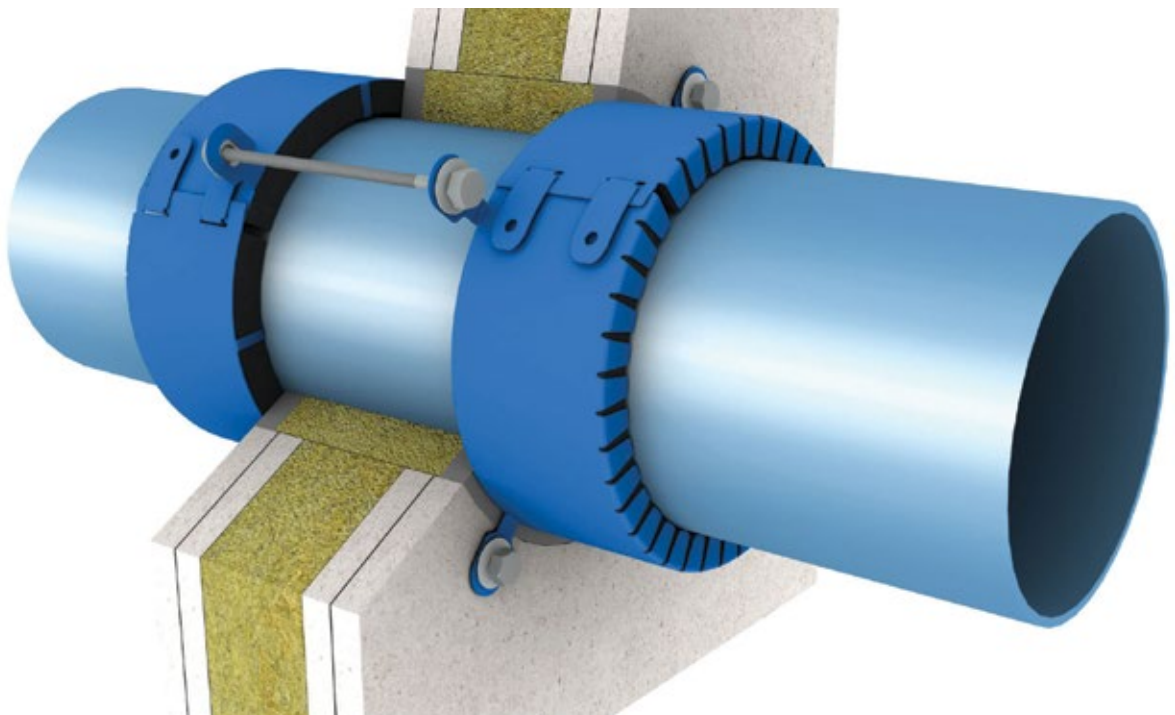


# Promat

## PROMASTOP®-FC Fire stopping collar



[www.promat-see.com](http://www.promat-see.com)





## General description

PROMASTOP®-FC is a fire stopping collar for plastic pipes made from powder-coated stainless steel with a special intumescent inlay. Due to the highly effective intumescent inlay layers the pipe penetrations can be installed according to the following chart.

## Fields of application

PROMASTOP®-FC fire stopping collars are tested for walls and floors in both surface-mounted and built-in conditions. They are suitable for all common plastic piping materials such as PVC, PP, PE, ABS, as well as for pressure pipes.

- PROMASTOP®-FC3: Installation depth of 30 mm for straight penetrations
- PROMASTOP®-FC6: Installation depth of 60 mm for couplings, angled penetrations and pipe diameter from 160mm

## System advantages / customer benefit

- Ready-to-install collar so assembly is quick and easy
- Possible to achieve zero gap
- Use category: Class Y<sub>1</sub>
- Two collar depths: 30 and 60 mm

## Test certificate / approval

- EN1366-3
- EN13501-1/2
- ETAG 026-2

## Packaging

- PROMASTOP® FC3/32 - PROMASTOP® FC3/160: 48 collars per box
- PROMASTOP® FC6/50 - PROMASTOP® FC6/160: 28 collars per box
- PROMASTOP® FC6/200 - PROMASTOP® FC6/315: 2 collars per box

## Storage requirements

- Store in dry conditions

## Safety instructions

- Please refer to the safety information sheet for additional advice

## Technical data and properties

Collar type	Internal diameter (mm)	External diameter (mm)	Number of fastening plates
PROMASTOP®-FC3/032	32	53	2
PROMASTOP®-FC3/040	40	61	2
PROMASTOP®-FC3/050	50	76	3
PROMASTOP®-FC3/056	56	82	3
PROMASTOP®-FC3/063	63	89	3
PROMASTOP®-FC3/075	75	106	3
PROMASTOP®-FC3/090	90	122	3
PROMASTOP®-FC3/110	110	142	4
PROMASTOP®-FC3/125	125	157	4
PROMASTOP®-FC3/160	160	202	5
PROMASTOP®-FC6/050	50	76	3
PROMASTOP®-FC6/056	56	82	3
PROMASTOP®-FC6/063	63	89	3
PROMASTOP®-FC6/075	75	106	3
PROMASTOP®-FC6/090	90	122	3
PROMASTOP®-FC6/110	110	142	4
PROMASTOP®-FC6/125	125	157	4
PROMASTOP®-FC6/140	140	177	5
PROMASTOP®-FC6/160	160	202	5
PROMASTOP®-FC6/200	200	242	5
PROMASTOP®-FC6/225	225	276	6
PROMASTOP®-FC6/250	250	312	6
PROMASTOP®-FC6/315	315	377	6

**Slovenia, SEE Management****Promat d.o.o.**

Kidričeva 56b  
4220 Škofja Loka  
T + 386 4 51 51 451  
F + 385 4 51 51 450  
E [info@promat-see.com](mailto:info@promat-see.com)  
[www.promat-see.com](http://www.promat-see.com)

**Romania****Branch office of Promat d.o.o. Slovenia**

Str. Vulturilor Nr. 98, 5th Floor  
030857 Bucharest  
T +40 31 224 01 00  
F +40 31 224 01 01  
E [info.ro@promat-see.com](mailto:info.ro@promat-see.com)  
[www.promat-see.com](http://www.promat-see.com)

**Bulgaria****Branch office of Promat d.o.o. Slovenia**

Aleksandar Zhendov 6  
1113 Sofia  
M +359 888 14 38 85  
M +359 878 81 51 05  
E [info.bg@promat-see.com](mailto:info.bg@promat-see.com)  
[www.promat-see.com](http://www.promat-see.com)

**Serbia, Macedonia, Montenegro,  
Kosovo****Branch office of Promat d.o.o. Slovenia**

Kopaonička 18  
18000 Niš  
T +381 18 4 530 297  
M +381 64 61 39 763  
F +381 18 4 230 570  
E [info.rs@promat-see.com](mailto:info.rs@promat-see.com)  
[www.promat-see.com](http://www.promat-see.com)

**Croatia, Bosnia and Herzegovina****Branch office of Promat d.o.o. Slovenia**

Samoborska 91  
10090 Zagreb  
T +385 1 349 63 24  
F +385 1 379 41 54  
E [info.hr@promat-see.com](mailto:info.hr@promat-see.com)  
[www.promat-see.com](http://www.promat-see.com)

**Slovakia****Branch office of Promat d.o.o. Slovenia**

Pražská 2  
949 11 Nitra  
T +421 377 729 165  
E [info.sk@promat-see.com](mailto:info.sk@promat-see.com)  
[www.promat-see.com](http://www.promat-see.com)

**Hungary****Branch office of Promat d.o.o. Slovenia**

Pirosrózsa u. 32.  
1163 Budapest  
T +36 1 317 58 91  
E [info.hu@promat-see.com](mailto:info.hu@promat-see.com)  
[www.promat-see.com](http://www.promat-see.com)

For all other Promat addresses, please visit [www.promat-international.com](http://www.promat-international.com).