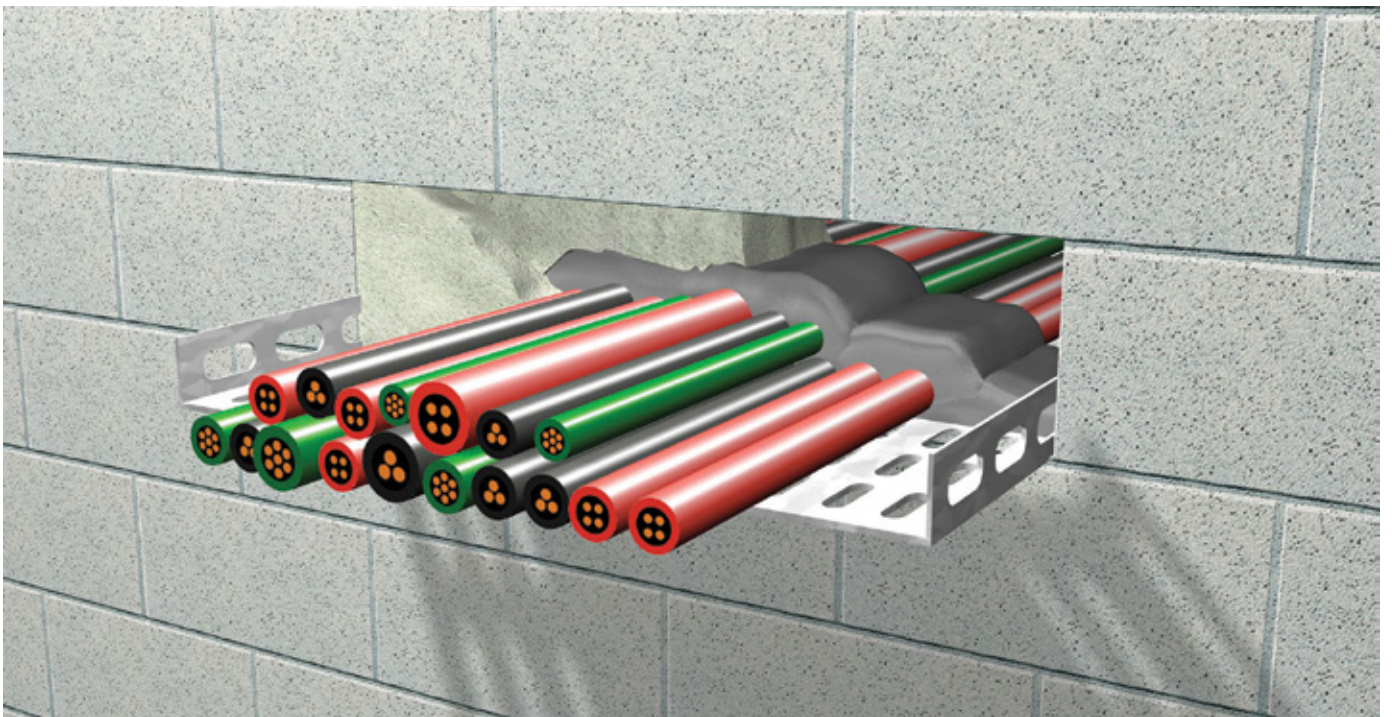


## PROMASTOP®-M Fire stopping mortar



[www.promat-see.com](http://www.promat-see.com)





### General description

PROMASTOP®-M is a cement based fire stopping mortar. PROMASTOP®-M in combination with additional protection performs to EI 120 in walls and floors.

### Fields of application

PROMASTOP®-M in combination with additional protection is a mortar system for walls and floors. It is designed for use with cables, cable bundles, combustible and non-combustible pipes to seal against the spread of smoke and fire.

### System advantages / customer benefits

- Excellent thermal insulation
- Overhead installation for small penetrations possible

### Test certificate / approval

- EN 1366-3
- EN 13501-2

### Packaging

- 20 kg paper bags
  - 40 bags/palett
- Subject to change.

### Storage requirements

- Store in cool and dry conditions: 3 °C - 35 °C
- Shelf life of original sealed containers at least 12 months
- Once opened, bags should be finished swiftly

### Safety instructions

- Please refer to the safety data sheet for additional advice
- Please mind the H and P phrases

| Technical data and properties |   |                        |
|-------------------------------|---|------------------------|
| Reaction to fire              | Class A1  |                        |
| Use category                  | Type X  |                        |
| Colour                        | light grey                                      |                        |
| Consistency                   | powder  |                        |
| Density (powder)              | 330 - 430 g/l                                   |                        |
| Ash content                   | 86 % ± 3 %                                      |                        |
| Wet density                   | 1,4 ± 0,2 g/cm <sup>3</sup>                     |                        |
| Dry density                   | 1,1 ± 0,2 g/cm <sup>3</sup>                     |                        |
| Air content                   | 13 %  |                        |
| Bucket life                   | approx. 60 mins. (depending on the consistency) |                        |
| Hardness                      | Time  | Bending strength       |
|                               | 3 days  | 2,95 N/mm <sup>2</sup> |
|                               | 7 days  | 4,0 N/mm <sup>2</sup>  |
|                               | 28 days   | 5,8 N/mm <sup>2</sup>  |

## **Bulgaria**

### **Etex Building Performance S.A.**

Str. Vulturilor Nr. 98, 5th Floor  
030857 Bucharest, Romania  
M +359 878 81 51 05  
E [info.bg@promat-see.com](mailto:info.bg@promat-see.com)  
[www.promat-see.com](http://www.promat-see.com)

## **Croatia, Bosnia and Herzegovina**

### **Etex Building Performance**

#### **Promat d.o.o.**

Kovinska 4a  
10090 Zagreb  
T +385 1 349 63 24  
F +385 1 379 41 54  
E [info.hr@promat-see.com](mailto:info.hr@promat-see.com)  
[www.promat-see.com](http://www.promat-see.com)

## **Greece**

### **Etex Building Performance S.A.**

Str. Vulturilor Nr. 98, 5th Floor  
030857 Bucharest, Romania  
T +40 31 224 01 00  
F +40 31 224 01 01  
E [info@promat-see.com](mailto:info@promat-see.com)  
[www.promat-see.com](http://www.promat-see.com)

## **Hungary**

### **Etex Building Performance**

#### **Creaton South-East Europe Kft.**

Malomkő u. 7.1. emelet  
2040 Budaörs  
M +36 30 343 2572  
M +36 30 455 1273  
E [info.hu@promat-see.com](mailto:info.hu@promat-see.com)  
[www.promat-see.com](http://www.promat-see.com)

## **Kosovo, Albania**

### **Etex Building Performance Sh.A.**

Ulpiana, D-1, HY-4 Nr.2  
10000 Prishtina  
T +383 38 553 407  
M +381 64 61 39 763  
M +377 44 120 671  
E [info@promat-see.com](mailto:info@promat-see.com)  
[www.promat-see.com](http://www.promat-see.com)

## **Romania**

### **Etex Building Performance S.A.**

Str. Vulturilor Nr. 98, 5th Floor  
030857 Bucharest  
T +40 31 224 01 00  
F +40 31 224 01 01  
E [info.ro@promat-see.com](mailto:info.ro@promat-see.com)  
[www.promat-see.com](http://www.promat-see.com)

## **Serbia, Macedonia, Montenegro**

### **Etex Building Performance d.o.o.**

Vojvode Putnika 79  
21208 Sremska Kamenica  
T +381 21 210 10 90  
M +381 63 625 426  
M +381 63 510 720  
E [info.rs@promat-see.com](mailto:info.rs@promat-see.com)  
[www.promat-see.com](http://www.promat-see.com)

## **Slovakia**

### **Etex Building Performance**

#### **EBM Co. s.r.o.**

Štúrova 155  
949 01 Nitra  
M +421 915 936 126  
E [info.sk@promat-see.com](mailto:info.sk@promat-see.com)  
[www.promat-see.com](http://www.promat-see.com)

## **Slovenia**

### **Etex Building Performance**

#### **Promat d.o.o.**

Kidričeva 56b  
4220 Škofja Loka  
T +386 4 51 51 451  
F +385 4 51 51 450  
E [info.si@promat-see.com](mailto:info.si@promat-see.com)  
[www.promat-see.com](http://www.promat-see.com)